



## Vertiv™ SmartCabinet™ ID

Delivering up to 7.0 kW of cooling with IP54 environmental protection for critical IT deployed in demanding environments



## Protect your data from demanding environments.

*Vertiv believes in a world where critical technologies always work. One of the biggest challenges in industrial environments is extreme conditions with dust, dirt, humidity, and temperature fluctuations.*

The Vertiv™ SmartCabinet™ ID has been designed with IP54 environmental protection for these challenging environments where dirt and humidity could severely impact system performance and life expectancy. By isolating the IT equipment housed inside the rack, the Vertiv™ SmartCabinet™ ID provides full protection and peace of mind to IT system managers.



### High efficiency cooling

Designed with an inverter compressor, the cooling unit provides 0-100% capacity modulation, providing even more flexibility to the system and allowing for expansion within the rack as well as future growth of your business.



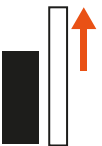
### Monitor and Control

The 9" HMI display comes standard with Modbus communication capabilities, providing Single Pane Of Glass monitoring locally and remotely giving all stakeholders instant access to critical data.



### Added protection for less secure environments

When your business depends on the data being managed by the IT equipment, security is a top priority. Ensure that your data is secured with intelligent locks and an emergency backup fan for added peace-of-mind.



### Enhance your solution with compatible Vertiv products

The Vertiv™ SmartCabinet™ ID delivers a full and robust IT solution when utilizing the Liebert® GXT5 UPS and select Geist™ Intelligent rPDUs (UPS and rPDU sold separately).



## More features with fewer headaches

### Feature-Packed Rack

The new Vertiv™ SmartCabinet™ ID comes standard in 24U or 42U options, has a large glass door to view equipment, and an integrated 9" HMI display for continuous monitoring. With IP54 protection and door locks, the Vertiv SmartCabinet ID eliminates the need to design and build a separate conditioned and secure IT space.

### Flexible Heat Rejection

The condenser unit can be mounted outdoors, next to the rack, or even on the roof of the rack. With multiple mounting options, install the Vertiv™ SmartCabinet™ ID in a wide range of applications!

### Integrated Power Management

Pre-integrated with a Power Management Block (PMB), the Vertiv™ SmartCabinet™ ID provides power to both the indoor evaporator and outdoor condenser. The PMB can be powered through facility cable or through a UPS for added reliability and extra run-time!

### Space-saving Cooling

Highly efficient and cost effective cooling, packed into a confined space without utilizing any U-Space! Choose between two options: 3.5kW and 7.0kW.

## Your Fully Sealed Cooling Solution

### VS3350

42U, 3.5kW Cooling Capacity

### VS3354

24U, 3.5kW Cooling Capacity

### VS3750

42U, 7.0kW Cooling Capacity



#### Outdoor heat rejection

Ensure proper temperature control inside the rack with outdoor heat rejection. And with the option to mount the condenser on the roof of the rack, added flexibility is built in.



#### Fully sealed rack

IP54 rating protects mission-critical IT equipment from dust and water, providing a longer life to the equipment and peace of mind to business owners.



#### Zero-U cooling solution

The Zero-U cooling solution maximizes the investment in your business by utilizing the full cabinet, allowing for more IT equipment to be installed.



#### HMI display with built-in communications

Easy remote access for monitoring and management of power, thermal conditions, and unit security, allowing for more precise control over your most valuable assets.



#### Integrated power distribution

Enable your IT investment to stay protected and online by installing a rack PDU on the pre-integrated mounting brackets. For added visibility, choose from select intelligent Geist rPDU models that are compatible with the integrated HMI display (rPDU's sold separately).



#### Emergency backup power

Reliable backup operations in the event of utility power failure through the use of the Vertiv GXT5 UPS (sold separately).



#### Protect your investment with service offerings from Vertiv

We are here to support you with service solutions for your critical infrastructure and to ensure that your vital applications always work. From thermal management to power and power distribution, the Vertiv SmartCabinet ID has a full suite of service offerings to help protect your investment and your business.

**For more information, visit [Vertiv.com](https://www.vertiv.com) or contact your local Vertiv sales representative.**

## Environmental protection for a fraction of the cost!

### Versatile IT Deployments

As technology evolves and your business grows, IT infrastructure becomes ever more important for maintaining optimal IT operation. And not every environment is conducive to housing mission critical IT deployments, so it's important to have a versatile solution that can handle whatever is thrown at it. Proper airflow, space limitations, and noise levels are all major concerns when in a setting near employees or customers, such as retail, education, or banking and finance. Dust, humidity, and temperature fluctuations are a major concern in more industrial environments where the advent of IIoT, automation, and Smart Factories are becoming a standard practice. The Vertiv™ SmartCabinet™ ID was specifically designed to handle all these challenges.

### Invest Intelligently

In many industrial applications, a major threat is damage to the equipment from the harsh environment it is being deployed into. In order to properly protect this mission critical equipment, isolated spaces with filtration, cooling, power, and more are required. However, building a separate room can add a significant amount to infrastructure costs and project timelines to properly protect the deployment.

Considerations of HVAC, electrical, lighting, room security, and drainage all need to be factored in. This adds significant costs and time through contractors, material, and planning. The Vertiv™ SmartCabinet™ ID has cooling, power, security, and outdoor heat rejection built into one easy to use and isolated system, all for a fraction of the cost of additional construction in the deployment site.

In addition to this, deployment of the Vertiv™ SmartCabinet™ ID takes days instead of months. Don't waste your budget on building a separate room to protect your IT, invest intelligently in a Vertiv™ SmartCabinet™ ID.

With IP54 rated protection from harsh conditions, the fully sealed cabinet protects business essential IT processing, storage, and networking equipment from potential damage. The fully sealed cabinet also acts to reduce noise levels from the IT equipment, making this an ideal solution for applications where ambient noise levels are of concern to people nearby. In addition to protection from environmental damage, the Vertiv™ SmartCabinet™ ID also delivers temperature and humidity regulation, and can be paired with power distribution and emergency power to ensure the system stays running at optimal conditions. For added installation flexibility, the condensing unit can be mounted outside or even on top of the cabinet.

## Benefits

### Fully integrate your critical IT deployment with robust solutions

- Fully sealed cabinet provides 24/7 protection from harsh environmental conditions that could damage IT equipment
- Integrated cooling takes up zero rack U-space, allowing for more IT installation
- Built-in HMI display with communication capabilities allows for local or remote monitoring and control
- Emergency backup fans ensure proper airflow and avoids overheating
- Multiple rack sizes and cooling capacity options provide flexibility for numerous applications
- Ensure high system availability with uninterrupted backup power with the optional Liebert GXT5 UPS\*
- Integrate your IT deployment with intelligent rack power distribution units for constant monitoring and high system availability\*

\*UPS and rPDU are not part of the Vertiv SmartCabinet ID offering. These are sold separately and are field installed components.

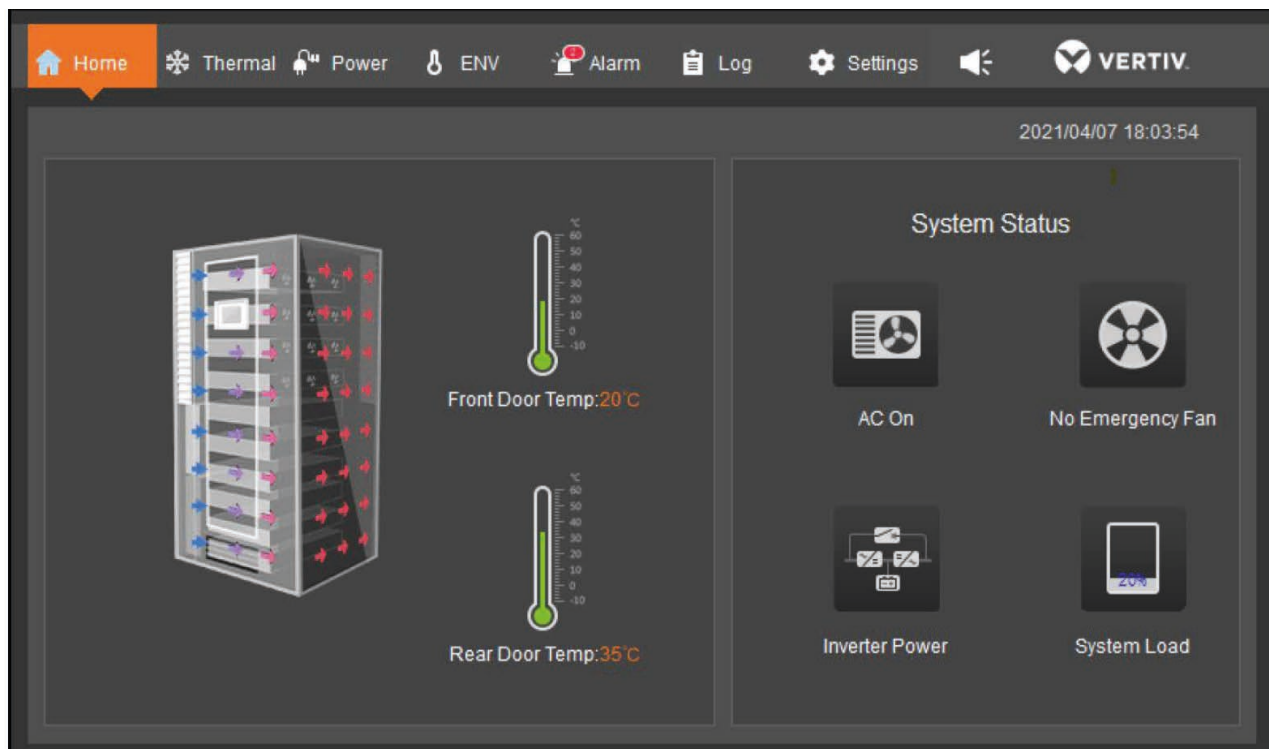
## Increasing Efficiency and Visibility

### High Cooling Availability

The Vertiv™ SmartCabinet™ ID delivers precision cooling in a controlled and contained environment, isolating your critical IT deployments from harsh conditions that could impact business operations. With the pre-integrated cooling unit designed to take up zero U-space, Vertiv™ offers a fully protected cabinet that provides full U-space utilization. In addition to occupying zero U-space, the cooling unit was also designed with full 0-100% cooling capacity modulation, delivering the precise amount of cooling that is required at any given time. By adjusting the delivered cooling capacity based on the required IT load, the Vertiv™ SmartCabinet™ ID lowers operational costs and manages fluctuations in IT demand throughout the day and as your business scales.

### Single-Pane-of-Glass Monitoring

One of the biggest challenges in Edge applications is limited visibility into system status if you are not proximate to the deployment. The Vertiv™ SmartCabinet™ ID addresses this and provides single pane-of-glass monitoring and control capabilities, making data and facility management that much easier for end users. Accessed through a large HMI touchscreen display, the Vertiv™ SmartCabinet™ ID can set and monitor temperature and humidity, power input and usage, alarm history, system status, and more. The Vertiv™ SmartCabinet™ ID offers remote access through a web-based user interface, allowing data center managers fast and convenient monitoring and control over the daily operations regardless of their location.





## Compatible Vertiv™ Liebert® GXT5 UPS Models (sold separately)

### GXT5 3kVA



### GXT5 6kVA



### GXT5 8-10kVA



Model	Input	Output
GXT5-3KL630RT2UXL	L6-30P	(2) L6-15R and (2) L6-30R
GXT5-6000MVRT4UXLN	Hard-wired terminal block 208V (L-L-N-G)	Hard-wired 120/208V (L-L-N-G)
GXT5-8000MVRT6UXLN	Hard-wired terminal block 208V (L-L-N-G)	Hard-wired 120/208V (L-L-N-G)
GXT5-10KMVRT6UXLN	Hard-wired terminal block 208V (L-L-N-G)	Hard-wired 120/208V (L-L-N-G)

## Maintenance Bypass and Output Distribution - Liebert® GXT5 UPS

POD Model Number	Input Connection	Output Connection	UPS
MP2-220N	L6-20P or Hard-wired with removable plug	L6-20R, (2) L6-15R, (2) L6-20R or Hard-wired with removable receptacle plates.	3kVA
PD5-005	L14-30P	4 x L5-20R, 2 x L6-30R	6kVA, MV
PD5-006	L14-30P	4 x L6-20R	6kVA, MV
PD2-102	N/A	(4) 5-15/20R T-slot, (4) L6-20R	8-10kVA, MV
PD2-103	N/A	(4) 5-15/20R T-slot, (4) L6-30R	8-10kVA, MV

## Compatible Vertiv™ Geist™ Rack PDU Models (sold separately)

Model	rPDU Type	rPDU Sub-Type	Horizontal / Vertical	Volts	Amps	Max kW	Plug Type	Receptacle QTY / Type	Max Operating Temp	VI Director
VP9571A	Basic	Standard	H	208V	30A	4.9kW	L6-30P	(12) C13	45°C / 113°F	N/A
VP7541	Basic	Standard	V	208V	30A	4.9kW	L6-30P	(20) C13 / (4) C19	45°C / 113°F	N/A
VP8841	Monitored	Unit Level	V	208V	30A	4.9kW	L6-30P	(36) C13 / (6) C19	60°C / 140°F	YES
VP7811B	Monitored	Unit Level	H	208V	30A	4.9kW	L6-30P	(12) C13 / (4) C19	60°C / 140°F	YES
VP8959NA3	Switched	Unit Level	V	208V	20A	3.3kW	L6-20P	(21) U-Lock C13 / (3) U-Lock C19	60°C / 140°F	YES
VP8941	Switched	Unit Level	V	208V	30A	4.9kW	L6-30P	(20) U-Lock C13 / (4) U-Lock C19	60°C / 140°F	YES
VP53100	Switched	Unit Level	H	208V	30A	4.9kW	L6-30P	(12) Combination C13 / C19	60°C / 140°F	YES

## Vertiv™ SmartCabinet™ ID Service Offerings - Thermal Management

### Thermal Startup Services

Warranty Inspection and Labor Warranty Bundle		Warranty Inspection Only	
Part Number	Description	Part Number	Description
WI-4HR	Warranty Inspection	WI-4HR	Warranty Inspection
3WL THERMLAB-B	(3) Year Labor Warranty Coverage		

### Thermal Preventative Maintenance

Part Number	Description
VRC200YI	Preferred 1 PM Per Year 24x7 scheduling parts and labor
VRC200YO	Essential 1 PM Per Year 8x5 scheduling parts and labor
VRC200YR	PM Only 24x7
VRC200YT	PM Only 8x5

### Thermal Value Added Services

Part Number	Description
3WPC-VRCS	3rd Year Parts w/Compressor w/labor
4WPC-VRCS	3rd to 4th Year Parts w/ Compressor w/labor
5WPC-VRCS	3rd to 5th Year Parts w/ Compressor w/labor

### Thermal Startup Services - Summary

- **Bundled** - (3) year protection program to be purchased only at the point of sale. Includes replacement of parts w/ labor. Ensures unit is properly installed and operational by Factory Certified and Authorized Field Technician.
- **Warranty Inspection Only** - (3) year protection program to be purchased only at the point of sale. Includes replacement of parts only no labor. Ensures unit is properly installed and operational by Factory Certified and Authorized Field Technician.
- **No warranty Inspection** - Unit is covered by the factory warranty only with no labor allowances.

### Thermal Preventative Maintenance - Summary

- Preferred - (1) Preventative Maintenance visit, parts replacement with Labor 7 x 24 response
- Essential - (1) Preventative Maintenance visit, parts replacement with Labor 5 x 8 response
- Preventative Maintenance Only 7x24 Response - (1) Preventative Maintenance visit, no parts replacement or labor warranty
- Preventative Maintenance Only 5X8 Response - (1) Preventative Maintenance visit, no parts replacement or labor warranty

### Thermal Value-Added Services - Summary

- Unit Exchange with Labor - Post factory warranty coverage available years 3 – 5

NOTE: Warranty Inspection, Labor Warranty bundle Includes labor warranty coverage from the date of shipment for the duration of the factory parts warranty. This is a LIST price item that is commissioned, based on the multiplier. All Part Numbers for the above bundle will appear on the Line Item Detail

NOTE: Warranty Inspection, unbundled Includes PARTS ONLY warranty from the date of shipment for the duration of the factory parts warranty in accordance with the factory warranty policy. Labor for warranty repairs is NOT COVERED. This is a NET PRICE item with no commission paid to the office and includes a 15% markup for Vertiv.

NOTE: The Vertiv SmartCabinet ID family of units are eligible for a "NO" Warranty Inspection or Labor Warranty option. Selection of the "NO" option WILL NOT provide verification that the system is installed and operating correctly and labor for warranty repairs is NOT COVERED.

## Vertiv™ SmartCabinet™ ID Service Offerings - Cabinet

### Cabinet Installation

#### Rack Assembly Services

Part Number	Description
1stCabRackAssem	1st Rack Assembly labor
AddCabRackAssem	2nd up to 5th Rack Assembly labor

### Cabinet Extended Parts Warranty

Part Number	Description
VSR-4WPC-CS	Cabinet & Aux Sensors Year 4 Parts Only Coverage
VSR-5WPC-CS	Cabinet & Aux Sensors Year 5 Parts Only Coverage

### Cabinet Labor Warranty

Part Number	Description
VSR-1WLC-CS	Cabinet & Aux Sensors Year 1 Labor Only Coverage
VSR-2WLC-CS	Cabinet & Aux Sensors Year 2 Labor Only Coverage
VSR-3WLC-CS	Cabinet & Aux Sensors Year 3 Labor Only Coverage
VSR-4WLC-CS	Cabinet & Aux Sensors Year 4 Labor Only Coverage
VSR-5WLC-CS	Cabinet & Aux Sensors Year 5 Labor Only Coverage

### Cabinet Installation - Summary

- Installation of first rack needs 1stCabRackAssem sku then every Rack up to (5) would use AddCabRackAssem for each Rack. Does not include installation of UPS or rPDU

### Cabinet Extended Parts Warranty - Summary

- Extend the factory installed Rack component warranty an additional 1 or 2 years. Does not cover the cooling UPS or rPDU's

### Cabinet Labor Warranty - Summary

- Provides warranty labor up to (5) years for complete coverage of the rack factory shipped components. Cooling unit, UPS's and rPDU's are not included in this labor warranty



